



jordan fishwick

BURNAGE
Glenhurst Road



Glenhurst Road, Burnage, M19 1WX

£310,000

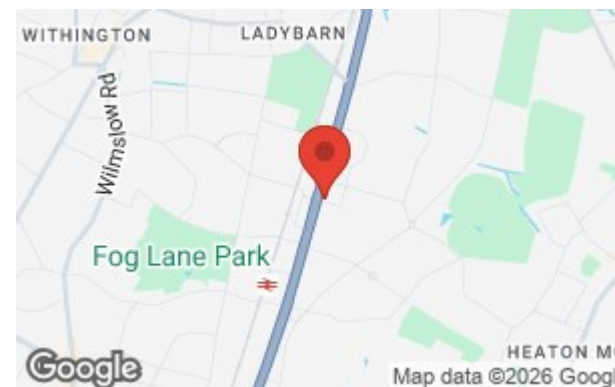


The Property

A well proportioned three bedroom semi detached property, positioned on a large corner plot. The property benefits from a spacious living room, dining kitchen along with three good sized bedrooms, ample off road parking to the front with a detached garage. Situated within a popular residential location this three bedroom semi detached property must be viewed to appreciate the accommodation on offer. To the ground floor level, the accommodation comprises:- entrance porch, a welcoming entrance hallway, spacious living room with feature fireplace, a fitted dining kitchen and downstairs W/C. To the first floor there are three good sized bedrooms, a fitted family shower room that serves all three bedrooms. Outside to the front of the property there is a larges driveway access via secure twin double gates with off road parking for multiple vehicles, a large lawned area and mature trees.

Directions

M19 1WX



- Three bed semi detached property
- Large corner plot with detached garage
- Double driveway
- Downstairs wc
- Gas central heating & Double glazed
- Lounge & Dining kitchen

Postcode - M19 1WX

EPC Rating - D

Floor Area - 1154.00 sq ft

Local Authority - Manchester City Council

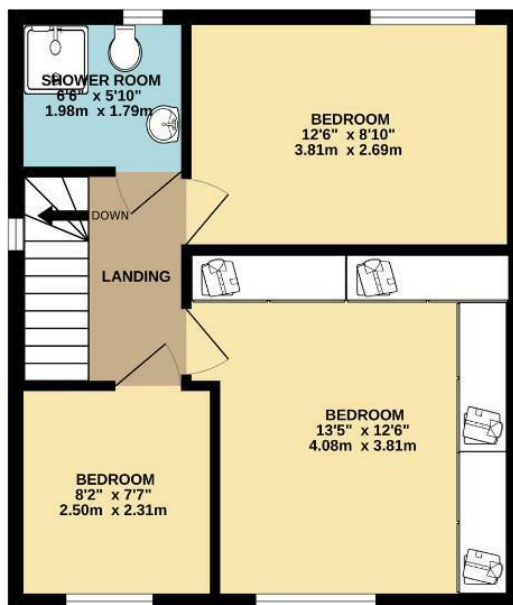
Council Tax - A



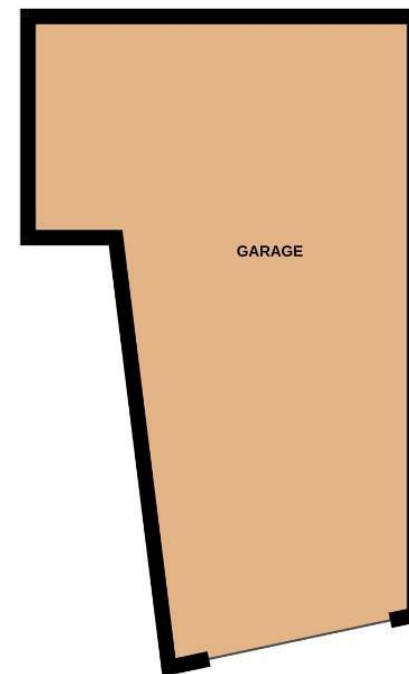
GROUND FLOOR
447 sq.ft. (41.6 sq.m.) approx.



1ST FLOOR
422 sq.ft. (39.2 sq.m.) approx.



GARAGE
285 sq.ft. (26.4 sq.m.) approx.



TOTAL FLOOR AREA : 1154 sq.ft. (107.2 sq.m.) approx.
Measurements are approximate. Not to scale. Illustrative purposes only
Made with Metropix ©2025



These particulars are believed to be accurate but they are not guaranteed and do not form a contract. Neither Jordan Fishwick nor the vendor or lessor accept any responsibility in respect of these particulars, which are not intended to be statements or representations of fact and any intending purchaser or lessee must satisfy himself by inspection or otherwise as to the correctness of each of the statements contained in these particulars. Any floorplans on this brochure are for illustrative purposes only and are not necessarily to scale.

Offices also at: Wilmslow, Macclesfield, Hale, Sale, Chorlton, Glossop, Manchester & Salford

757-759 Wilmslow Road, Didsbury Village, Manchester

0161 445 4480

didsbury@jordanfishwick.co.uk
www.jordanfishwick.co.uk